



1960 - 1970 Falcon Sample Card

Vinyl Color Choices



Black
L-958 or 101



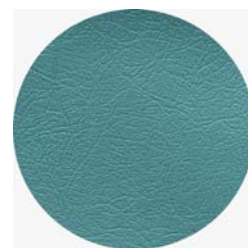
Red
L-957 or 153



Black
L-110



Red
L-1377



Light Blue
L-1761



Dark Blue
L-1763



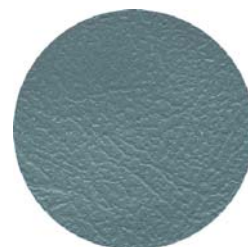
Light Turquoise
L-1934



Dark Turquoise
L-1991



Ivy Gold
L-2286



Light Blue
L-2287 or 156



Palomino
L-2288 or 152



Ivy Gold
L-2503 or 155



Dark Blue
L-2505 or 160



FAWN
L-2586



Parchment
L-2613



Red
L-2920



**Medium
Turquoise/ Aqua**
L-2929 or 159



Dark Turquoise
L-3097



Red
L-3116



Medium Blue
L-3883



ANTIQUE AUTO PARTS

P.O. BOX 238 • LOCKPORT, NY • 14095-0238 PHONE 716-210-1340

FAX: (716) 210-1370 TOLL FREE: (800) 777-0948

1960 - 1970 Falcon Sample Card

Carpet & Floor Mat Color Choices



Black
#11



Red
#12



Ford Blue
#13



Dark Saddle
#14



Dark Green
#15



Ford Maroon
#21



Medium Ford Blue #22



Fawn
#23



Aqua
#24



Emberglo
#25

Floor Mat Logo Choices

Using the same 80/20 loop pile material & all of the same colors, these floor mats will match our carpets beautifully. The grip-lock, non-skid backing will keep them in place. Available with or without and embroidered logo (logo mats are NOT returnable). The logo will appear on front mats only & will be located in the heel area of the mat.



8880-PLAIN



8880-LOGO

When selecting one of these logos, also choose a contrasting thread color (not an option with logos #111, #116, #135 & #136)

Silver
White

Red
Blue

Black
Gold

(Specify when ordering)



54



129



137



91



133



139



111



135



148



116



136



149

Every effort has been made to accurately depict the colors of our materials; however, variances in dyes, printer toner and even the paper used can affect this, so please use this sample card as a reference only.



ANTIQUE AUTO PARTS

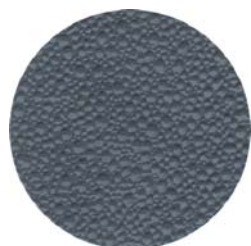
P.O. BOX 238 • LOCKPORT, NY • 14095-0238 PHONE 716-210-1340

FAX: (716) 210-1370 TOLL FREE: (800) 777-0948

1960 - 1970 Falcon Sample Card

Headliner Color Choices

Crater (Moonskin) Vinyl



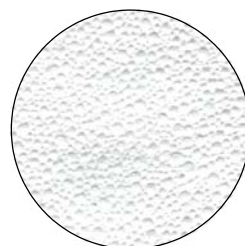
**Medium Blue
#9**



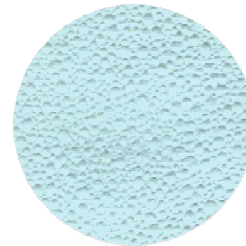
**Black
#11**



**Bone
#12**



**White
#13**



**Light Aqua
#15**

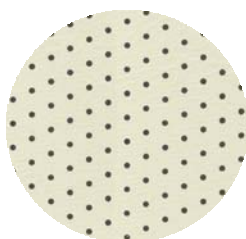


**Parchment/ Tan
#16**



**Dark Red
#19**

Black Dot & Starline Vinyl



BLACK DOT



STARLINE

Tier Vinyl



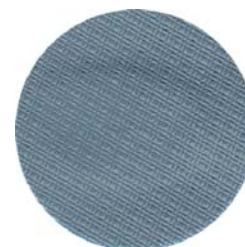
**Black
#21**



**White
#22**



**Green
#24**



**Medium Blue
#28**



**Red
#46**

Convertible TopColor Choices



**Black On Black
CV21**



**White On Black
CV22**



**Tan On Black
CV24**

Every effort has been made to accurately depict the colors of our materials; however, variances in dyes, printer toner and even the paper used can affect this, so please use this sample card as a reference only.



ANTIQUE AUTO PARTS

P.O. BOX 238 • LOCKPORT, NY • 14095-0238 PHONE 716-210-1340

FAX: (716) 210-1370 TOLL FREE: (800) 777-0948

1960 - 1970 Falcon Sample Card

Windlace Color Choices

Vinyl



Ivy Gold



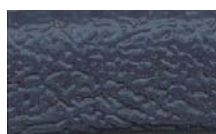
Green



Aqua



Black



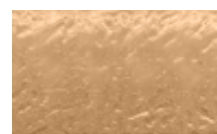
Dark Blue



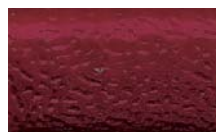
Saddle



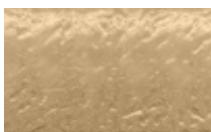
Light Blue



Ginger



Maroon



Light Parchment



Red

Cloth

Black

Red

White

Gray

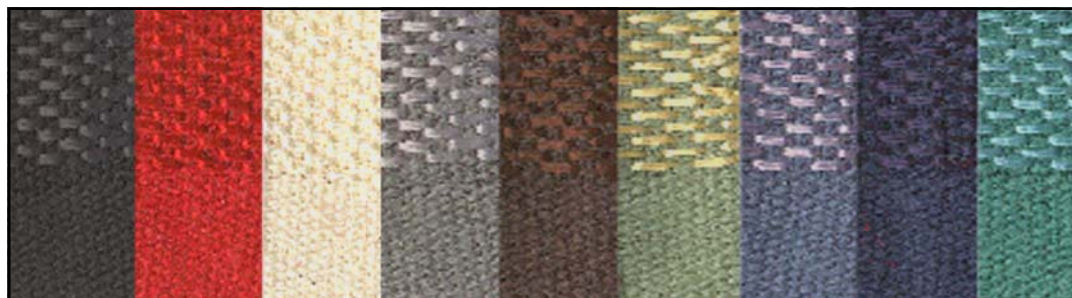
Brown

Green

Blue

Dark Blue

Turquoise



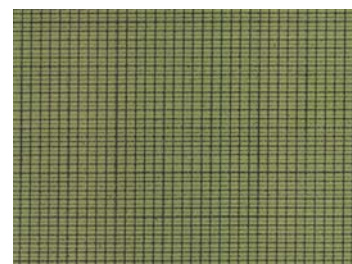
Trunk Mat Color And Pattern Choices



Plaid 08



Spatter 34



Lime Green Waffle 31

Every effort has been made to accurately depict the colors of our materials; however, variances in dyes, printer toner and even the paper used can affect this, so please use this sample card as a reference only.



ANTIQUE AUTO PARTS

P.O. BOX 238 • LOCKPORT, NY • 14095-0238 PHONE 716-210-1340

FAX: (716) 210-1370 TOLL FREE: (800) 777-0948

1960 - 1970 Falcon Sample Card

Seatbelt Color Choices



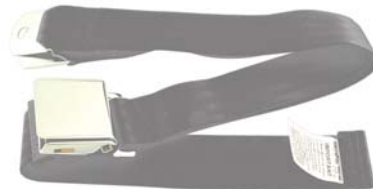
SEATBELT-BLK60
SEATBELT-BLK74



SEATBELT-WHT60
SEATBELT-WHT74



SEATBELT-LGR60
SEATBELT-LGR74



SEATBELT-DGR60
SEATBELT-DGR74



SEATBELT-LTN60
SEATBELT-LTN74



SEATBELT-DTN60
SEATBELT-DTN74



SEATBELT-LBL60
SEATBELT-LBL74



SEATBELT-DBL60
SEATBELT-DBL74



SEATBELT-BRD60
SEATBELT-BRD74



SEATBELT-DRD60
SEATBELT-DRD74

Every effort has been made to accurately depict the colors of our materials; however, variances in dyes, printer toner and even the paper used can affect this, so please use this sample card as a reference only.